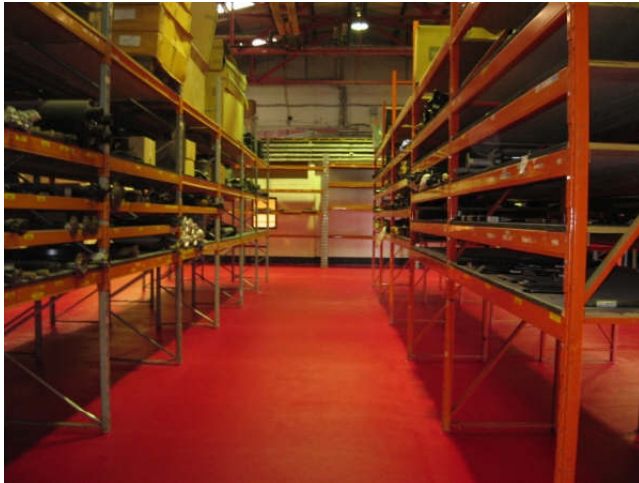


# Harris Hino- Naas Road, Dublin



## Specifications:

- A coating that would withstand heavy duty traffic from forklifts and vehicles.
- Fully watertight so that it could be easily steam cleaned
- Non Slip surface
- Can be laid at 20% moisture content
- Will expand and Contract with whatever Substrate Material is applied to.
- Minimal disruption

## RHINO LININGS Ireland

- Supplied non slip highly durable surface.
- The surface is guaranteed not to Warp or Peel.
- The existing floor was repaired and sprayed directly on top of with no disruption to the factory.
- Rhino Linings Floor Coating was applied to Cement, Tiles and Steel without the need to remove any of these substrates causing minimal disruption.



***“I WILL USE THEM AGAIN AND AGAIN - A amazing company who worked with me to have this done exactly as I needed”*** – Pinno Harris – Harris Hino, main Iveco and Isuzu Dealers